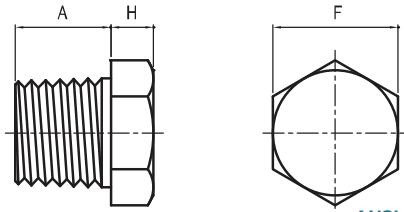


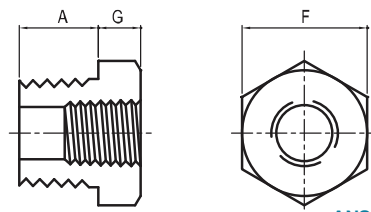
HEX HEAD PLUG



ANSI B16.11

Nominal Pipe Size	Length (Minimum) A	Hex Height Min. H	Width Flats (Nominal) F	Unit Weight (kg)
1/8	9,5	6	11,0	0,03
1/4	11,0	6	16,0	0,03
3/8	12,5	8	17,5	0,06
1/2	14,5	8	22,0	0,09
3/4	16,0	10	27,0	0,14
1	19,0	10	35,0	0,23
1 1/4	20,5	14	44,5	0,51
1 1/2	20,5	16	51,0	0,63
2	22,0	17	63,5	1,02
2 1/2	27,0	19	76,0	1,76
3	28,5	21	89,0	2,67
4	32,0	25	117,5	5,90

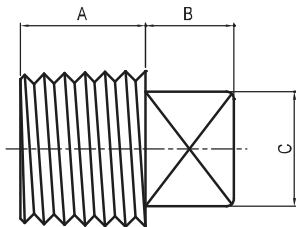
HEX HEAD BUSHING



ANSI B16.11

Nominal Pipe Size	Length (Minimum) A	Hex Height Min. G	Width Flats (Nominal) F	Unit Weight (kg)
1/4	11,0	3	16,0	0,03
3/8	12,5	4	17,5	0,03
1/2	14,5	5	22,0	0,03
3/4	16,0	6	27,0	0,09
1	19,0	6	35,0	0,09
1 1/4	20,5	7	44,5	0,17
1 1/2	20,5	8	51,0	0,31
2	22,0	9	63,5	0,74
2 1/2	27,0	10	76,0	1,08
3	28,5	10	89,0	1,59
4	32,0	13	117,5	3,77

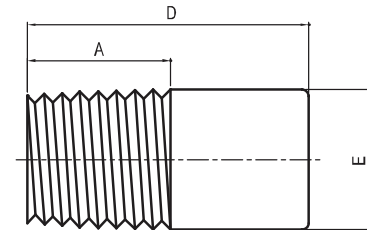
SQUARE HEAD PLUG



ANSI B16.11

Nominal Pipe Size	Length (Minimum) A	Height of Square (Minimum) B	Width Flats (Minimum) C	Unit Weight (kg)
1/8	9,5	6	7,0	0,01
1/4	11,0	6	9,5	0,01
3/8	12,5	8	11,0	0,03
1/2	14,5	10	14,5	0,06
3/4	16,0	11	16,0	0,09
1	19,0	13	20,5	0,14
1 1/4	20,5	14	24,0	0,25
1 1/2	20,5	16	28,5	0,40
2	22,0	17	33,5	0,68
2 1/2	27,0	19	38,0	1,02
3	28,5	21	43,0	1,31
4	32,0	25	63,5	3,26

ROUND HEAD PLUG



ANSI B16.11

Nominal Pipe Size	Length (Minimum) A	Nominal Diameter of Head E	Length (Minimum) D	Unit Weight (kg)
1/8	9,5	10	35	0,057
1/4	11,0	13	41	0,057
3/8	12,5	17	41	0,085
1/2	14,5	21	44	0,170
3/4	16,0	27	44	0,170
1	19,0	33	51	0,340
1 1/4	20,5	43	51	0,340
1 1/2	20,5	48	51	0,710
2	22,0	60	64	1,361
2 1/2	27,0	73	70	2,155
3	28,5	89	70	3,456
4	32,0	114	76	5,838